

Finding the right partnumber with GARRETT turbochargers



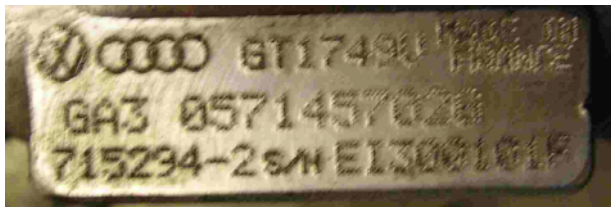
Option 1:

The number is ingraved in the identification plate.
In this example, the partnumber is : **700447-0007**



Option 2:

The number is engraved in the compressor housing (cold side) of the turbo
In this example, the partnumber is : **715294-2**



How to recognize the correct Garrett partnummers

Standard structure : xxxxxx-xxxx

6 digits, followed by a dash "-", followed by either 1,2 or 4 digits

Examples : 700447-0007 ; 715294-2 ; 454061-10

Garrett partnumbers start with "4", "7", or "8"

Finding the right partnumber with IHI turbochargers



The number is engraved in the compressor housing (cold side) of the turbo



How to recognize the correct IHI partnumbers

IHI partnumbers are composed from a SPEC number and a family number.

Example

In this case, the SPEC number is **VJ27**

The family name is **RHF3**

Finding the right partnumber with KKK turbochargers



The number is engraved in the identification plate

In this example, the correct partnumber is 5303 988 0020



How to recognize the correct KKK partnumbers

The figure “988” in the middle indicates it is the partnumber of the complete turbo. This can also be “970” on older models.

In this case, the partnumber could be **5303 988 0020** or **5303 970 0020**.

Sometimes, the partnumber is only to be found in an abbreviated form on the plate, in this example this would be **K03-020**

Finding the right partnumber with Mitsubishi turbochargers



The partnumber is engraved in the identification plate
Partnumber structure is xxxxx-xxxxx
In this example, the partnumber is **49189-01000**



How to recognize the correct Mitsubishi partnumbers

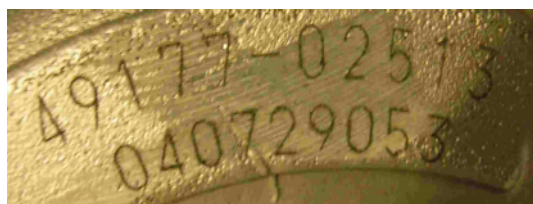
Mitsubishi partnumbers start with "491" or "493"

Sometimes, these 3 digits are left out of the identification plate (because of restricted space), which is shown below :

The partnumber in this case is **73-06100**, which is **49173-06100** written out plain.



The number is engraved in the compressor housing (cold side) of the turbo



In this case, the correct partnumber is **49177-02513**

Finding the right partnumber with HOLSET turbochargers



The partnumber is engraved in the identification plate
In this case the right partnumber is 3539162



How to recognize the correct Holset partnumbers

Holset numbers consist of 7 digits, starting with 3 or 4

Finding the right partnumber with SCHWITZER turbochargers

Schwitzer

The partnumber is engraved in the identification plate
In this case the right partnumber is **310160**



How to recognize the correct Schwitzer partnumbers

Schwitzer numbers consist of 6 digits, starting with 3